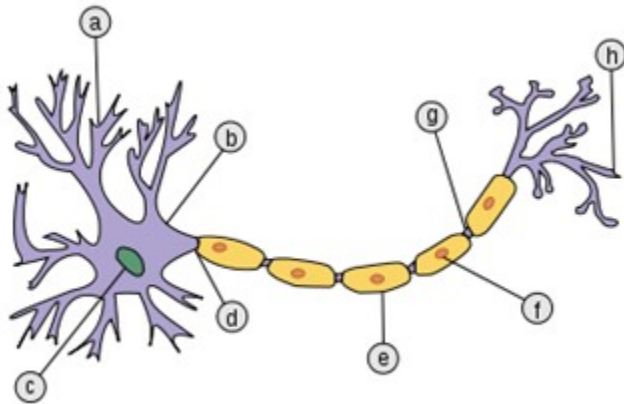


Exam Page 1

Identify the parts of the neuron shown in the diagram below



A: dendrite

B: cell body

C: nucleus

D: axon

E: myelin sheath

F: schwann cell

G: node of ranvier

H: axon terminal

Exam Page 2

List the four parts of the human brain

The human brain is made up of the cerebral hemispheres, diencephalon, brain stem, and cerebellum.

List and describe the 3 meninges of the human brain.

The leathery dura mater is the double-layered outer meninx.

The middle arachnoid meninx is a loose layer separated from the dura mater by the subdural space.

The inner pia mater meninx is composed of connective tissue and is tightly attached to the brain.

Exam Page 3

Using the image below, identify the following six items:

A:

B:

C: pulmonary trunk

D: right atrium

E:

F:

G:

H: tricuspid valve

I: - right ventricle

J:

K:

L: inferior vena cava

M: aorta

N: left pulmonary artery

O:

P: left pulmonary veins

Q: pulmonary semilunar valve

R:

S:

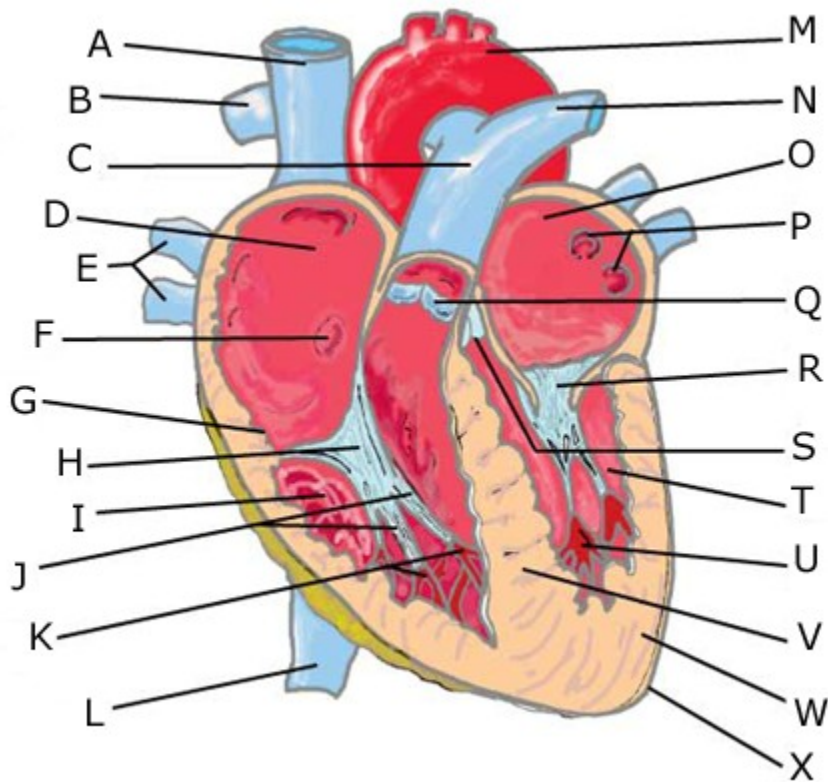
T: left ventricle

U:

V:

W:

X: visceral pericardium



Exam Page 4

Answer the following three questions:

List the four major heart valves.

Tricuspid, mitral/bicuspid, aortic, pulmonary

What is a sphygmomanometer used to measure?
To measure blood pressure

The T wave represents what?
Ventricular repolarization (diastole)

Exam Page 5

List the 3 sections of the fallopian tubes.

- The 3 sections of the fallopian tubes are the infundibulum, ampulla and isthmus.

List the 3 coats of the fallopian tubes.

- The 3 coats of the fallopian tubes are the outer serous coat, the middle muscular coat, and an inner mucosa coat.

Exam Page 6

Match the description with its corresponding structure.

Structure:

Spermatogonia: - k. Sperm-producing stem cells

Spongy urethra: - e. Runs through penis to external opening

Acrosome: - b. Contains enzymes that break down egg membrane

Ectoderm: - i. Skin producing layer of blastocyst

Description:

a. Connects seminal vesicle to ejaculatory duct

b. Contains enzymes that break down egg membrane

c. Liver producing layer of blastocyst

d. Muscle producing layer of blastocyst

- e. Runs through penis to external opening
- f. Secretes alkaline fluid to increase sperm motility
- g. Secretes fructose as part of semen
- h. Secretes urine-clearing mucus
- i. Skin producing layer of blastocyst
- j. Sperm maturation site
- k. Sperm-producing stem cells
- l. Supplies locomotive energy for sperm

Match the description with its corresponding structure.

Structure:

- 1. Ovary: [k. Site of egg production](#)
- 2. Uterus body: [f. f. Holds fetus during development](#)
- 3. Cervix: [h. h. Protects fetus from bacteria](#)
- 4. Fallopian tube: [a. Captures egg during ovulation](#) or [e. Fertilization site](#)

Description:

- a. Captures egg during ovulation
- b. Contracts to push baby out of uterus
- c. End of oviduct farthest from uterus
- d. End of oviduct closest to uterus
- e. Fertilization site
- f. Holds fetus during development
- g. Hollow pear-shaped organ