



# Review Test Submission: Quiz - Week 4 Knowledge Check

Test	Quiz - Week 4 Knowledge Check
Started	12/25/21
Submitted	12/25/21
Due Date	12/27/21
Status	Completed
Attempt Score	7 out of 10 points
Time Elapsed	26 minutes
Results Displayed	All Answers, Submitted Answers, Correct Answers, Feedback

## Question 1

0 out of 1 points

COPD has rapidly progressing symptoms while asthma symptoms occur most often during the

afternoon and evening.

Selected Answer:  True  
Answers:  True  
 False

## Question 2

1 out of 1 points

Most patients with mitral valve prolapse are asymptomatic and require no intervention other than periodic clinical examinations and echocardiographic follow up evaluation every 3–5 years

Selected Answer:  True  
Answers:  True  
 False

## Question 3

1 out of 1 points

What is the leading cause of death for women in the United States?

Selected Answer:  Cardiovascular disease  
Answers:  Lung disease  
 Cardiovascular disease  
 Breast cancer  
 Neuromuscular disease

## Question 4

0 out of 1 points

All are a risk factor for COPD except:

Selected Answer:  childhood respiratory infections  
Answers:  cigarette smoking  
 airway hyporeactivity

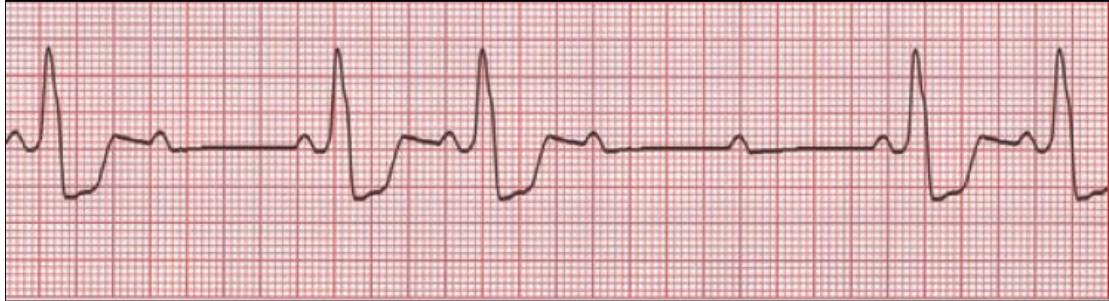
childhood respiratory infections

occupational exposures

### Question 5

1 out of 1 points

How would you interpret this EKG?



Selected Answer:  Second degree heart block Mobitz Type 2

Answers:  STEMI

Second degree heart block Mobitz Type 2

Atrial fibrillation

Ventricular tachycardia

### Question 6

1 out of 1 points

What is the gold standard test for diagnosing pulmonary TB infection?

Selected Answer:  Sputum C&S

Answers:  PPD skin test

Mantoux test

Sputum C&S

T-SPOT TB

### Question 7

1 out of 1 points

The leading cause of bacterial pneumonia is \_\_\_\_\_ which is gram

Selected Answer:  Strep pneumoniae; positive

Answers:  H. Influenza; negative

Tuberculosis; positive

Strep pneumoniae; positive

Staph aureus; negative

## Question 8

1 out of 1 points

Lobar consolidation is more common in \_\_\_\_\_ pneumonia and bilateral diffuse. Infiltrates are seen more commonly in \_\_\_\_\_ pneumonia.

Selected Answer:  typical; atypical

Answers:  typical; atypical

atypical; typical

fungal; viral

viral; fungal

## Question 9

0 out of 1 points

The NP has prescribed a beta blocker for 40 year old black male. The NP knows

Selected Answer:  There is no concern with rebound hypertension.

Answers:

Beta-blockers are medications that do not need to be weaned

There is no concern with rebound hypertension.

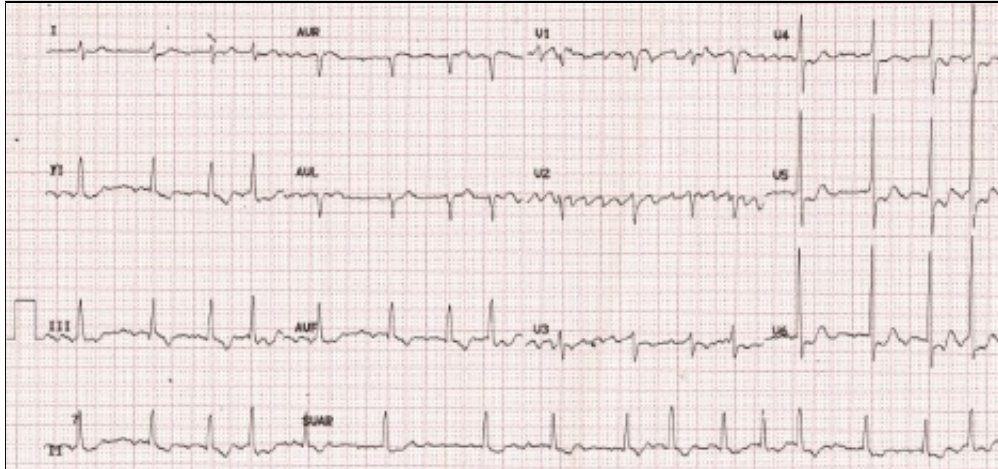
The medication must be weaned off slowly

The patient can discontinue at any time he decides with no problems

## Question 10

1 out of 1 points

How would you interpret this EKG?



Selected Answer:  Atrial fibrillation

Answers:  STEMI

First degree heart block

Atrial fibrillation

Sinus rhythm

Monday, December 27, 2021 8:14:13 PM EST

← OK