

Final Exam- Requires Respondus LockDown Browser

Due No due date Points 120 Questions 39 Time Limit 90 Minutes

Requires Respondus LockDown Browser

This quiz is currently locked.

Attempt History

	Attempt	Time	Score
LATEST	Attempt 1	59 minutes	111 out of 120

Score for this quiz: **111** out of 120

Submitted Apr 17, 2021 at 6:41pm

This attempt took 59 minutes.

Question 1

2 / 2 pts

Which of the following are considered Protista? Select all that apply.

Bacteria

Correct!

Amoeba

Correct!

Algae

Yeast

Question 2

2 / 2 pts

True or False: A defining characteristic of Protista is the inability of colonies to form tissue layers.

Correct!

True

False

Question 3

2 / 2 pts

The function of the ribosome is (select all that apply):

To produce energy (ATP)

Lipid synthesis

Correct!

Protein synthesis

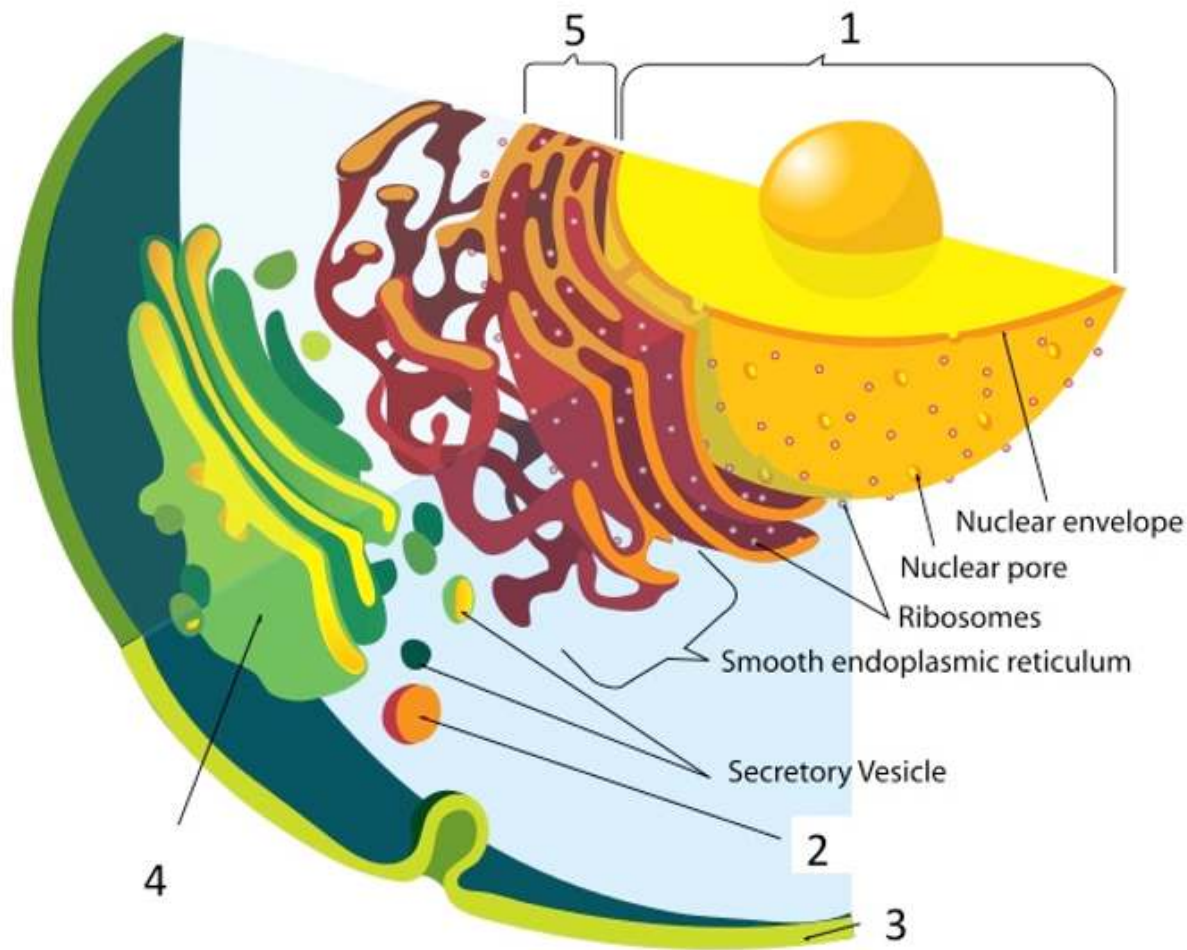
Ribosomes are located in the cytoplasm of prokaryotic cells and in the ER of eukaryotic cells.

Waste disposal via hydrolytic enzymes

Question 4

5 / 5 pts

Identify the following cellular components by matching the number with the description.



- A. Cell wall
- B. Lysosome
- C. Centriole
- D. Rough endoplasmic reticulum
- E. Plasma membrane
- F. Nucleus
- G. Golgi apparatus

Correct!	1	F
Correct!	2	B
Correct!	3	E
Correct!	4	G
Correct!	5	D

Question 5

2 / 2 pts

Cell walls are found in which of the following (select all that apply):

Correct!

Algae

Correct!

Bacteria

Mammalian cells

Correct!

Plants

Correct!

Fungi

Question 6

2 / 2 pts

The function of the mitochondria is (select all that apply):

Correct!

To produce energy (ATP)

Mitochondria are considered the power plant of the cell, as it produces ATP.

Protein synthesis

Waste disposal via hydrolytic enzymes

Protein modification and distribution

Lipid synthesis

Question 7

2 / 2 pts

True or False. All multicellular microorganisms classified as Animalia are autotrophic.

True

Correct!

False

They are heterotrophic.

Question 8

2 / 2 pts

How many ATP does the tricarboxylic acid (TCA) cycle produce per pyruvate?

2 ATP

34 ATP

4 ATP

Correct!

1 ATP

The TCA cycle produces only 1 ATP per pyruvate.